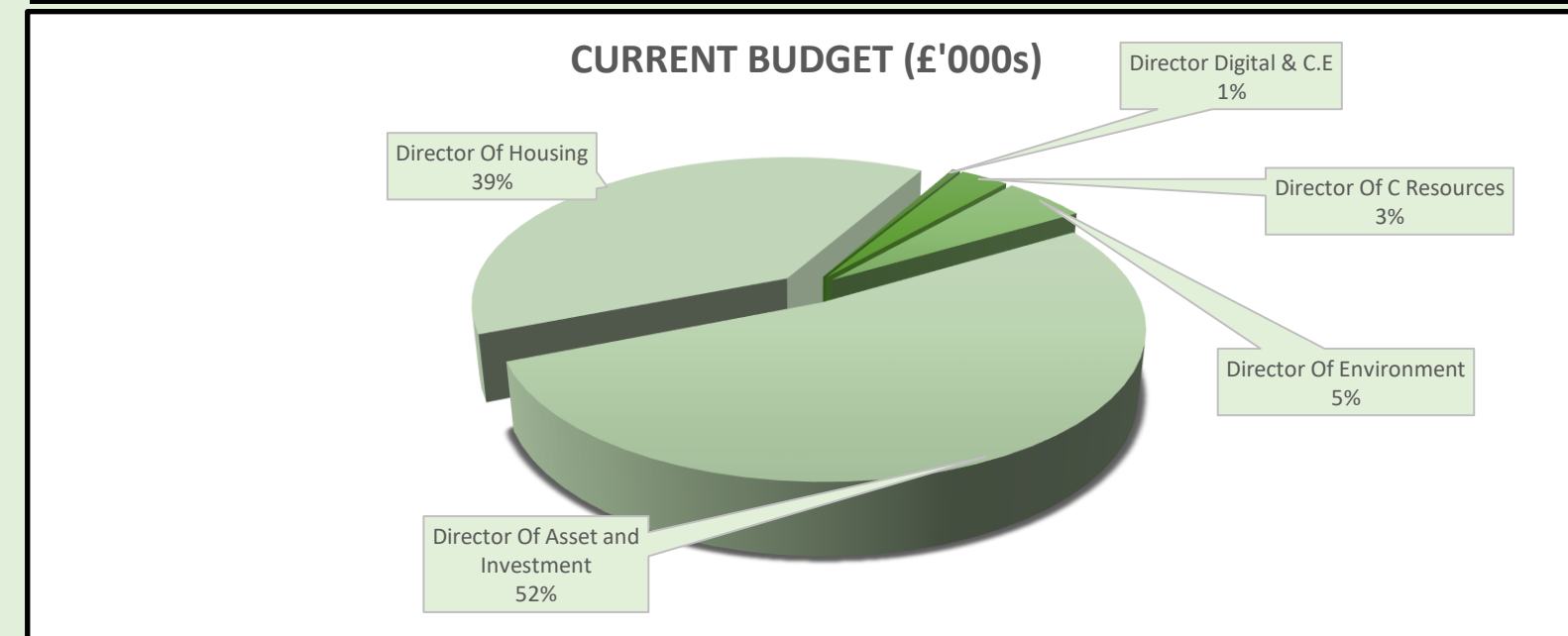


## CAPITAL FINANCIAL DASHBOARD

CODE	CAPITAL PROJECT	£'000s			PROPOSED SLIPPAGE for 23/24
		CURRENT BUDGET	Q1 Est Outturn	Variance	
<b>CAPPRO</b>	<b>CAPITAL PROGRAMME</b>	<b>58,340</b>	<b>39,697</b>	<b>(18,643)</b>	<b>(20,885)</b>
	<b>Director Digital &amp; C.E</b>	<b>275</b>	<b>275</b>	<b>0</b>	<b>0</b>
C103	Ict Strategy	100	100	0	0
C155	Software Licences	50	50	0	0
C203	Ict Hardware	125	125	0	0
	<b>Director Of C Resources</b>	<b>1,651</b>	<b>1,651</b>	<b>0</b>	<b>0</b>
C107	E-Financial	51	51	0	0
C110	Asset Management Strategy	100	100	0	0
C217	Brentwood Leisure Centre	1,000	1,000	0	0
C223	Asset Compliance	250	250	0	0
C230	Retrofit - GF	250	250	0	0
	<b>Director Of Environment</b>	<b>4,898</b>	<b>2,799</b>	<b>(2,099)</b>	<b>(2,713)</b>
C125	Vehicle Replacement Programme	1,388	1,242	(146)	(146)
C128	Play Area Refurbishments	100	100	0	0
C215	Football Hub Development	2,817	250	(2,567)	(2,567)
C149	Home Repair Assistance Grants	5	0	(5)	0
C150	Disabled Facilities Grant	250	250	0	0
C193	Car Park Improvements	100	620	520	0
C200	Open Spaces Infrastructure	100	100	0	0
C220	Low Emissions infrastructure	138	138	0	0
CLA	S106	0	100	100	0
	<b>Director Of Housing</b>	<b>22,007</b>	<b>14,972</b>	<b>(7,035)</b>	<b>(10,663)</b>
CJA	HRA Decent Homes	6,007	9,635	3,628	0
CJB	HRA Affordable Housing	16,000	5,337	(10,663)	(10,663)
	<b>Director Of Asset and Investment</b>	<b>29,509</b>	<b>20,000</b>	<b>(9,509)</b>	<b>(7,509)</b>
C222	Regeneration fund	20,000	18,000	(2,000)	0
C228	Baytree Centre redevelopment	4,988	1,250	(3,738)	(3,738)
C229	Childerditch Redevelopment	4,521	750	(3,771)	(3,771)

DIRECTORATE	CURRENT BUDGET (£'000s)	Outturn (£'000s)	PROPOSED SLIPPAGE for 22/23 (£'000s)
Director Digital & C.E	275	275	0
Director Of C Resources	1,651	1,651	0
Director Of Environment	2,817	250	(2,567)
Director Of Asset and Investment	29,509	20,000	(7,509)
Director Of Housing	22,007	14,972	(10,663)
<b>Total</b>	<b>56,259</b>	<b>37,148</b>	<b>(20,739)</b>



TOP 5 Biggest Projects		
Rank	PROJECT	BUDGET (£'000s)
1	Regeneration fund	20,000
2	HRA Affordable Housing	16,000
3	HRA Decent Homes	6,007
4	Baytree Centre redevelopment	4,988
5	Childerditch Redevelopment	4,521